



Developing for the Managed Desktop

Session 815





Developing for the Managed Desktop

Rob Neville
Desktop Management Solutions Manager

Introduction

- Mac OS X Managed Desktop
- What is Apple doing and how does it work
- How do your applications play in the Mac OS X network environment
- How you can best fit in to Managed environment



What You Will Learn

- History—Mac Manager in Mac OS 8 and 9
- Managed Desktop in Jaguar
- How you can play in this environment



History

- Mac Manager 2.1 ships with Mac OS X Server
 - Provides Multiple User functionality to Mac OS 8 and 9
 - Basic Desktop management support
 - Manage by User/Workgroups
 - Largely used in education market
 - Will continue to support Mac OS 8 and 9 users
- Follow on to At Ease/Mac Manager 1.0



What We Have Learned

- Network Traffic
 - Keep it to a I/O to a minimum
- Preference Storage
 - Cache files locally where possible
- Document Access
 - The server may not be there always



Network Traffic

- Customers are moving to wireless
 - This is 11Mb bandwidth max
- Customers do not have robust networks
 - Switches and Servers are bottlenecks
- Polling of files is “bad”
 - File I/O takes time
 - Multiple simultaneous I/Os





Demo

An example of polling applications

Preference Storage

- Cache user preferences locally where possible
- Do not use preferences as cache files
 - Large cache files duplicated for each user can be a waste of space on servers



Document Access

- Keep potential network file I/O down where possible
- Understand connection may not persist
 - Allow saving locally always
 - Be volume fault tolerant



Managed Mac OS X

- This takes place in Server Manager Application
- Set Account types
 - Users, Groups, Computer Lists
- Set Share Points
 - Group Volumes
- Set Preferences per Account type
 - Initial, Forced, None
- Prefs are cached for offline usage



Managed Mac OS X— Users and Groups

- All set up in Server Manager Application
 - Set base configurations
 - Home Directories—groups, etc.
- Set in a Directory Services Node
 - Can be LDAPv3 or NetInfo
- Still need to import into Mac Manager Application
 - Only for Mac OS 8 and 9 users



Managed Mac OS X—Sharing

- Creating Group Volumes
 - Recommended way of managing large number of users
- Set in a Directory Services Node
 - Can be LDAPv3 or NetInfo



Managed Mac OS X— Preferences

- Login Window, Finder, Dock, Media Access, Internet, Application Access, Printing, and Classic
 - Preferences, Access, Limits
- Invoked at Login
- Cached preferences for unconnected access

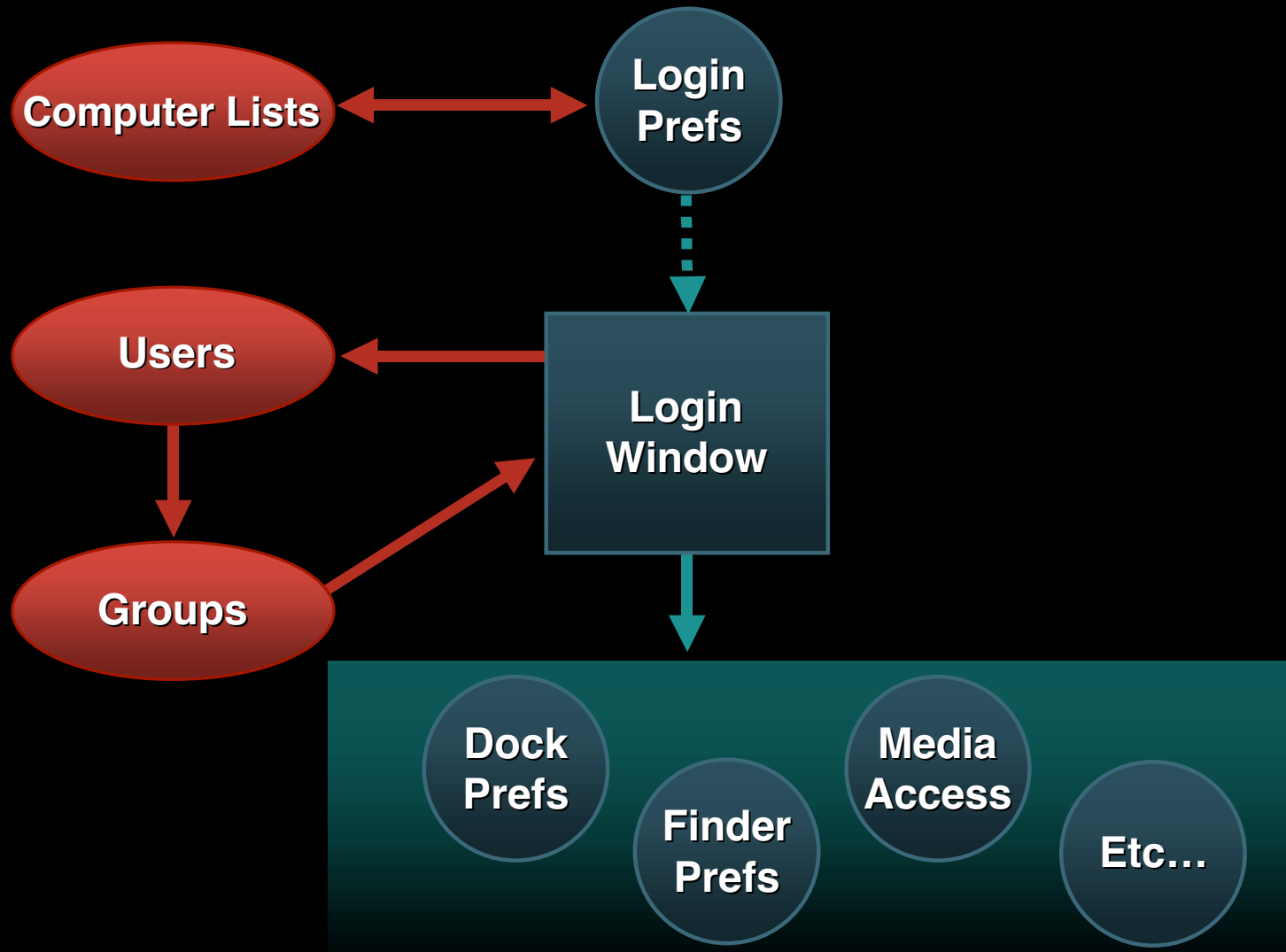


Managed Client in Mac OS X

- Order to preference priority
 - Users—groups—computers
- Recommend managing per group
- Create local accounts for users
 - Cache for offline preferences



Managed Client in Mac OS X





Demo

Managed Preferences in Mac OS X

Development Going Forward

- Assume your applications will be running in a network environment
- Assume applications access will be controlled by Admins
 - Identify Helper applications clearly
 - IE and Stuffit



Development Going Forward

- Use the CF Preferences model
 - Allows potential for “managed applications”
 - Takes advantage of System compatibility



Summary

- Mac OS X is a managed client
- Assume your applications are running on a network
 - Try and limit I/O as much as possible
- Use the CF Prefs Model
 - To allow your applications to be managed in the future



Roadmap

801 Mac OS X Server Overview:
Overview of Server software offerings

Room A2
Mon., 3:30pm

802 Mac OS X Server in Depth:
In depth view of Server software

Room A2
Mon., 5:00pm

FF017 Server Services:
Server feedback forum

Room J
Fri., 5:00pm



Who to Contact

Rob Neville

Desktop Solutions Manager
rneville@apple.com

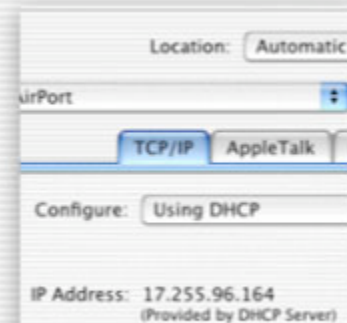
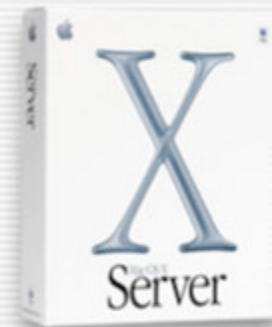
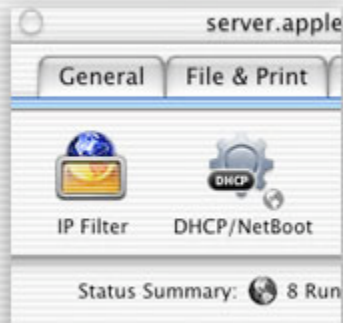
Tom Weyer

Network and Communications Evangelist
weyer@apple.com





Q&A



Tom Weyer
Network and Communications Evangelist
weyer@apple.com

<http://developer.apple.com/wwdc2002/urls.html>

 **WWDC2002**

 **WWDC2002**

 **WWDC2002**